



Oifig an  
Rialaitheora Pleanála  
Office of the  
Planning Regulator

# Energy Planning Climate and Local Authority Development Plans

**Niall Cussen: Planning Regulator**



[info@opr.ie](mailto:info@opr.ie)



[www.opr.ie](http://www.opr.ie)

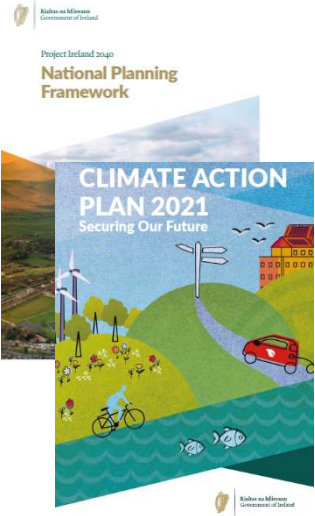


[PlanningReg](https://twitter.com/PlanningReg)



[company/office-of-the-planning-regulator](https://www.linkedin.com/company/office-of-the-planning-regulator)

# Context for OPR Assessment of Local Authority Development Plans

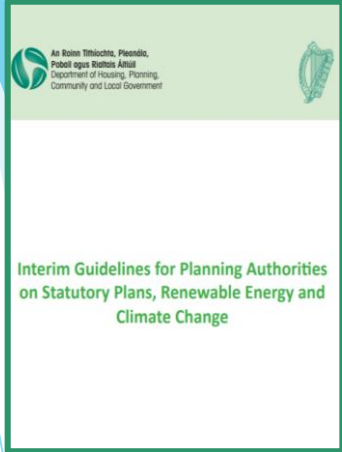


**National Planning/Climate Policy**

**Planning and Development Act 2000**

**Section 28 Ministerial Guidelines**

**Regional Spatial and Economic Strategies**



**County/ City Development Plans**  
**Local Area Plans**



# Legislative Framework

## Section 10 (2)(n) Planning Act

Promotion of measures, through the location, layout & design new development, that

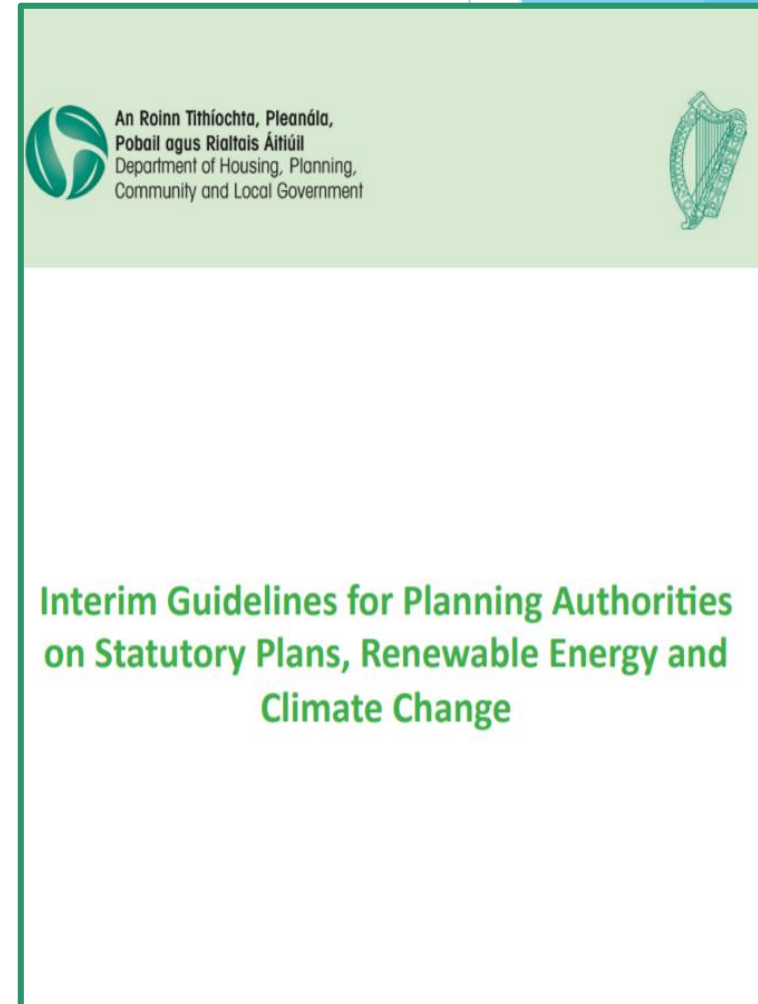
- ❑ Reduces energy demand;
- ❑ Reduces greenhouse gas emissions; and
- ❑ Adapts to effects of climate change.

### What does this mean in practice?

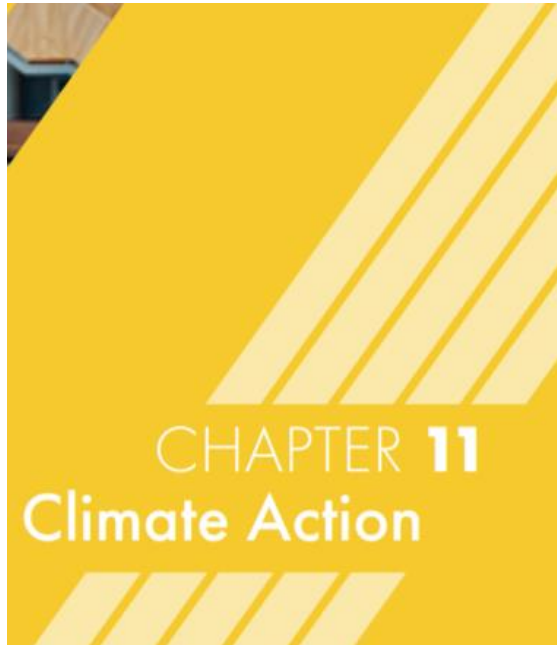
- ▶ **Lower emissions** through modern mixed-use, plus, central location, plus good access to public transport...
- ▶ **Increase renewable deployment** through analysis of share of national RE targets (80% RES-E by 2030) deliverable in your LA area...
- ▶ Pro-actively plan for district heating – spatially analyse areas for retrofit – plan for energy as much as housing...

# Interim Guidelines on Climate & Renewable Energy

- ▶ Section 4: Specific Planning Policy Requirement:
- ▶ DP's must indicate how the implementation of the relevant plan or local area will contribute to realising overall national targets on renewable energy and climate change mitigation, and in particular wind energy production and the potential wind energy resource (in megawatts)...
- ▶ Demonstrate detailed compliance with above in any proposal to introduce or vary a mandatory setback distance or distances for wind turbines from specified land uses...



# Need to move away from the aspirational....



*“the plan strongly supports the development of renewable energy resources.”*

## CPO 10.133

Ensure the security of energy supply by supporting the potential of the wind energy resources of the County in a manner that is consistent with proper planning and sustainable development of the area.

# and internally contradictory policies....

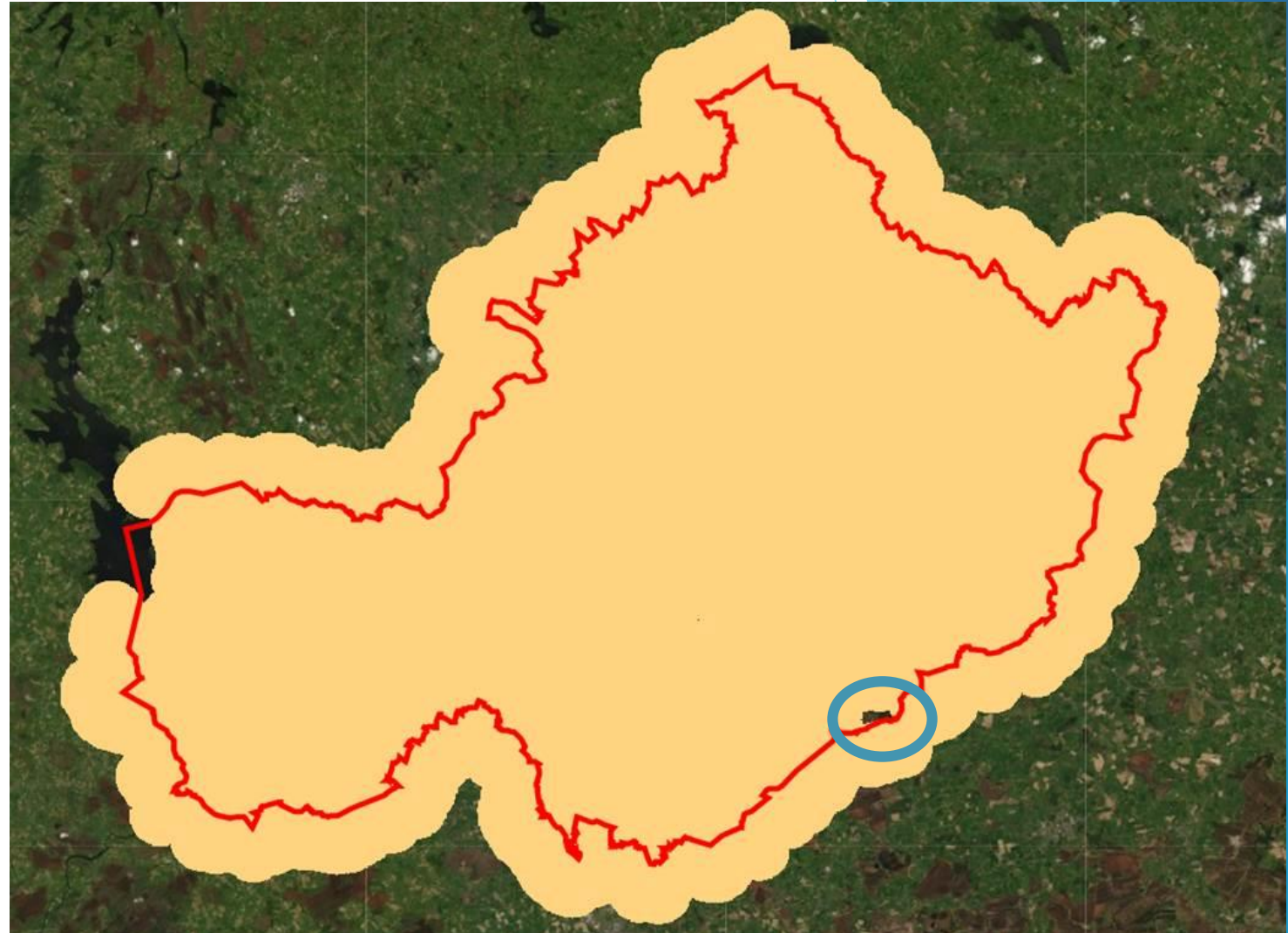


## Setting Constraints not thought through...

- Separation Distances
- Landscape Designations
- Limited areas 'acceptable' or 'open'

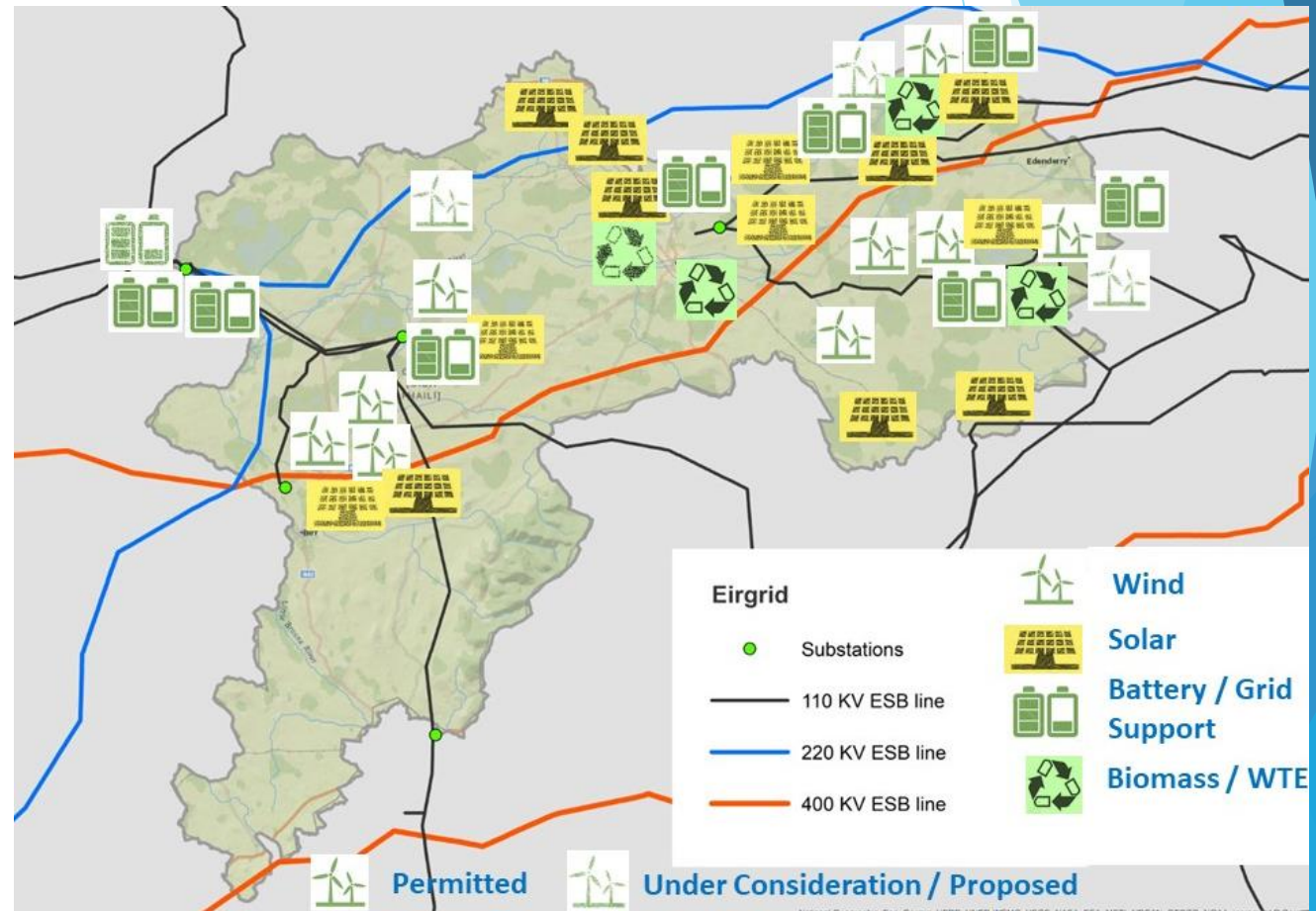
## Results in inconsistencies with:

- Government Climate Policy
- Government Planning Policy
- CDP objectives



# ...towards pro-active climate & target centred planning...

- ▶ Offaly CDP 2021-2027
- ▶ Good example of strategic approach
- ▶ Targets +466MW wind 145MW battery storage & 445MW solar
- ▶ Strategic energy zones...yet
- ▶ Protection of wilderness corridors
- ▶ Leveraging of amenity routes through sustainable energy projects
- ▶ Recent presentation at this link:  
<https://www.opr.ie/elected-members-training-october-2021-2/>



# LA Development Plans

5 practical areas for climate-compatible planning: (OPR Assessment will focus on these)



Reject car based mobility and/or development likely to be accessed primarily by sustainable travel modes...(calculating CO2 reductions)



Identify where/how renewable energy solutions can be rolled out in line with wider environmental considerations to go from 30% to 70% renewables...(analyse potential MW)



Identify and designate specific areas as carbon sinks – peatlands – forestry...(calculate KT potential)



Target areas for retrofit programmes – walking/cycling networks - energy efficiency - district heating initiatives for delivery by associated programmes ('tonnes CO2 saved per head...')



Stress-test existing built-up areas and key infrastructure to extreme weather events...(analyse/show areas at risk from flood/storms..incorporate resilience measures)



# Conclusions...

- ▶ **Planning: has a major role to play (in step with allied policies) in climate action...**
- ▶ **Planning for renewables & required energy & networks is critically important...**
- ▶ **Legislative & policy context demands a quantitative approach/evidence based plans...**
- ▶ **Government could assist by translating national targets to regional/county data...**
- ▶ **OPR assessment of plans is prioritising proactive energy/climate planning...**
- ▶ **Failure to implement = Directions (e.g. Westmeath/Kilkenny)...**

